

# PLANNING FOR WORLD CITIES

A New York Case Study

Bob Yaro, President  
Regional Plan Association

University of Toronto

December 1, 2011

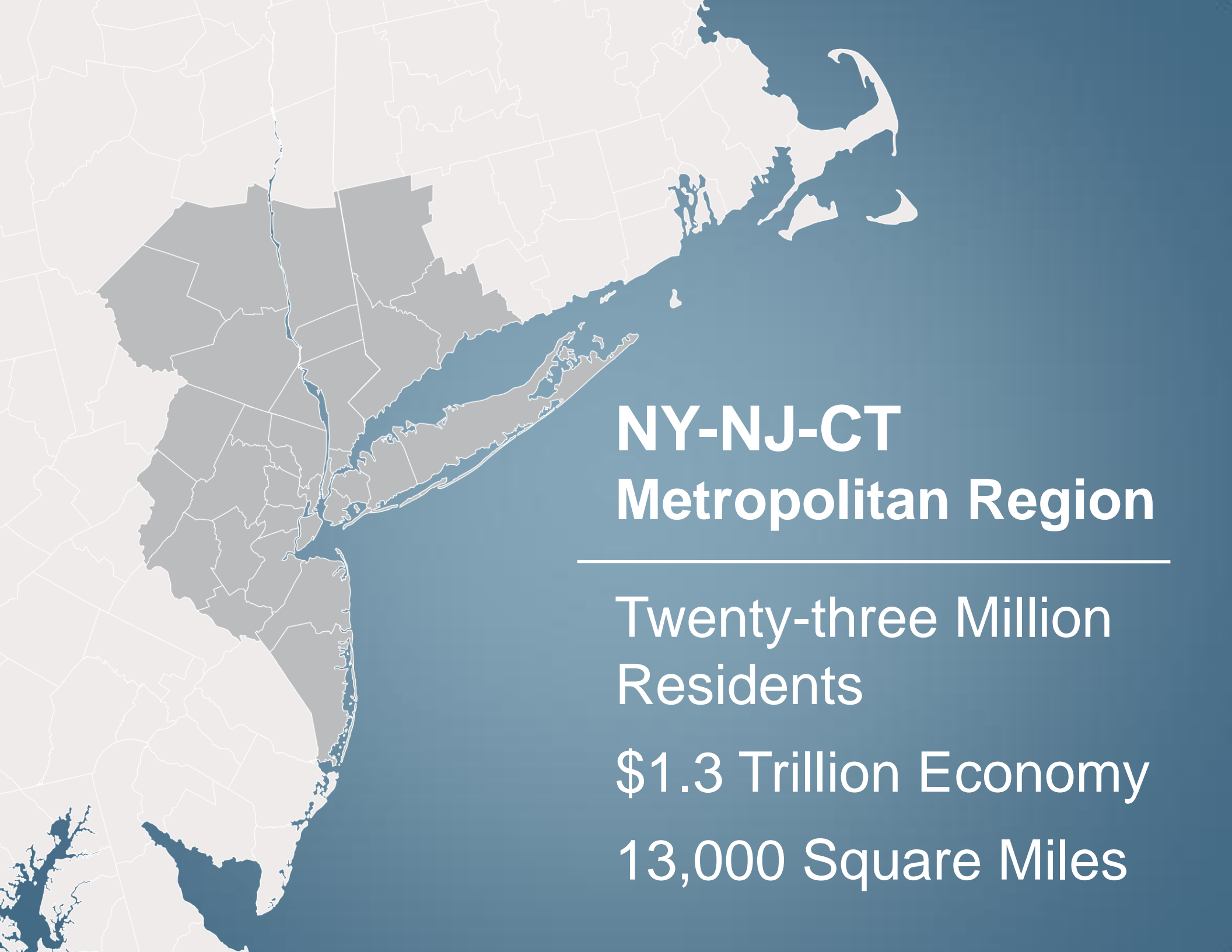
NY • NJ • CT

---

**Regional  
Plan  
Association**

---

w w w . r p a . o r g



# NY-NJ-CT Metropolitan Region

---

Twenty-three Million  
Residents

\$1.3 Trillion Economy

13,000 Square Miles

# RPA promotes growth while maintaining high quality of life

---

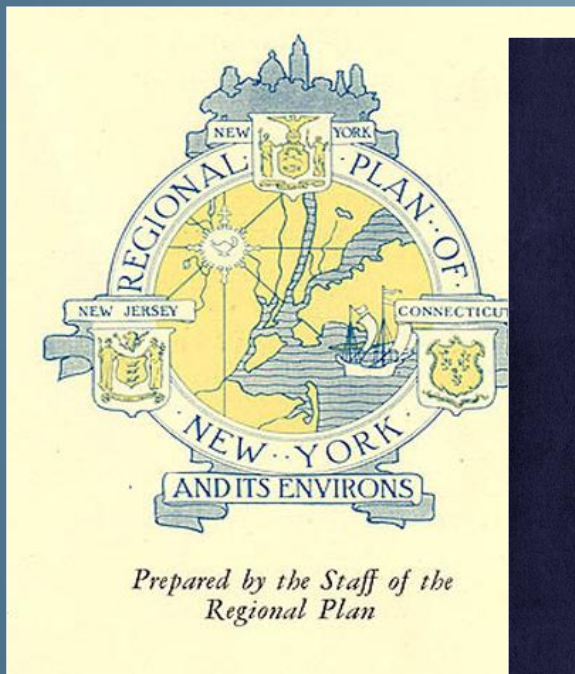
Since 1922, RPA is an independent, non-partisan champion for major investments, development and conservation in the tri-state metropolitan region.



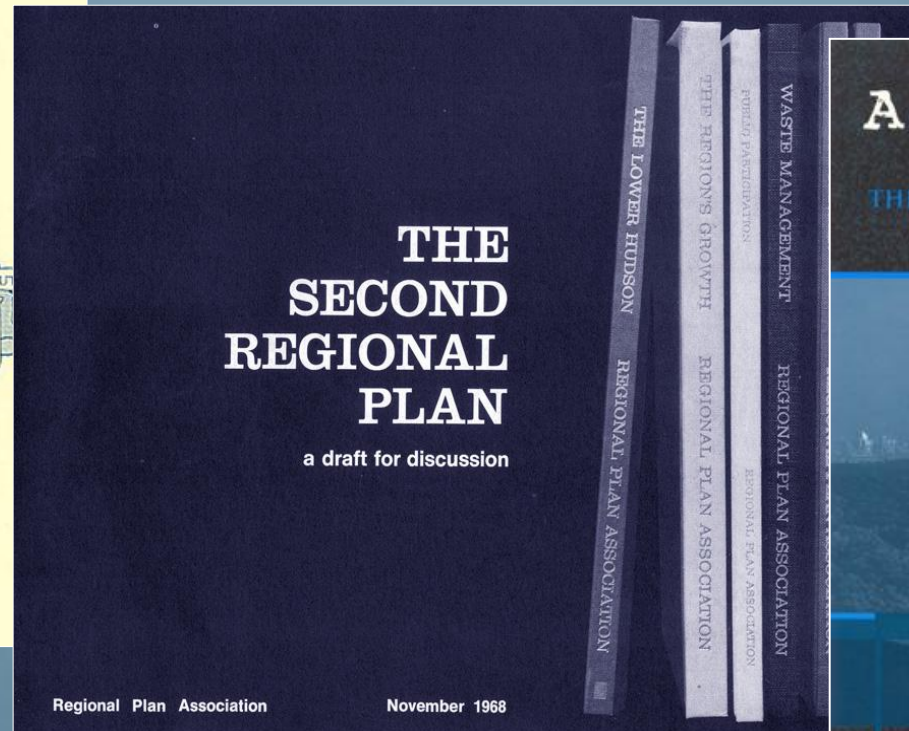
- \$75 billion in infrastructure investments since 1999
- 1 million acres of protected open space
- Acknowledged expert on assessing the regional impact of major development projects in the region
- Community designs to promote sustainable growth locally

# The Three Regional Plans

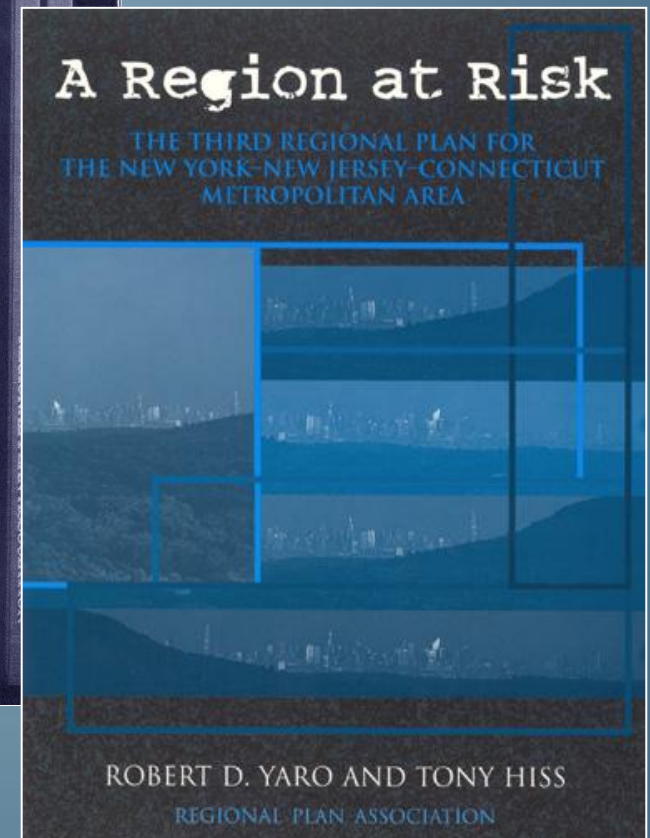
1929



1968



1996



# Topics for Discussion

## I. Global Competitiveness

I. Poverty Reduction and Social Equity

II. Climate Change and Sustainability

# How Can the New York Region Remain Globally Competitive?

The region faces a new set of challenges:

- Population growth and demographic change
- Infrastructure reaching the limits of capacity
- Inefficient land use
- Shrinking open space
- Climate change and energy scarcity
- Uneven and inequitable growth patterns
- Global competition

# The New York Region's Growth – 2030

---

## New York Region

3.8 million more people

3 million more jobs

## New York City

900,000 more people

1.1 million more jobs



Job growth drives economic growth – every 1,000 jobs adds **\$100,000,000** to **Gross Regional Product**.



# Transit Infrastructure

A map of a coastal region, likely the San Francisco Bay Area, showing transit infrastructure. The map features a network of lines: purple lines representing the subway system and orange lines representing commuter rail. The lines are overlaid on a light blue map background with grey street grids. Two circular callouts provide statistics for each system. The subway callout is in the top right, and the commuter rail callout is in the bottom left.

Subway

860 miles of track

468 stations

Commuter rail

2,013 miles of track

374 stations

# Transit Improvements

A stylized map of New York City showing the Hudson River, East River, and surrounding areas. Three callout boxes are overlaid on the map, each with an arrow pointing to a specific transit project location. The callouts are: 1. Trans-Hudson Tunnel (top left), 2. Second Ave Subway (bottom center), and 3. East Side Access (right side). The map features various colored lines representing transit routes and a blue area representing water.

## Trans-Hudson Tunnel

The ARC project, which would have doubled capacity, was cancelled in 2011

Advocacy will pursue a new tunnel for both commuter and inter-city rail

## Second Ave Subway

Benefits 500,000 commuters upon full completion

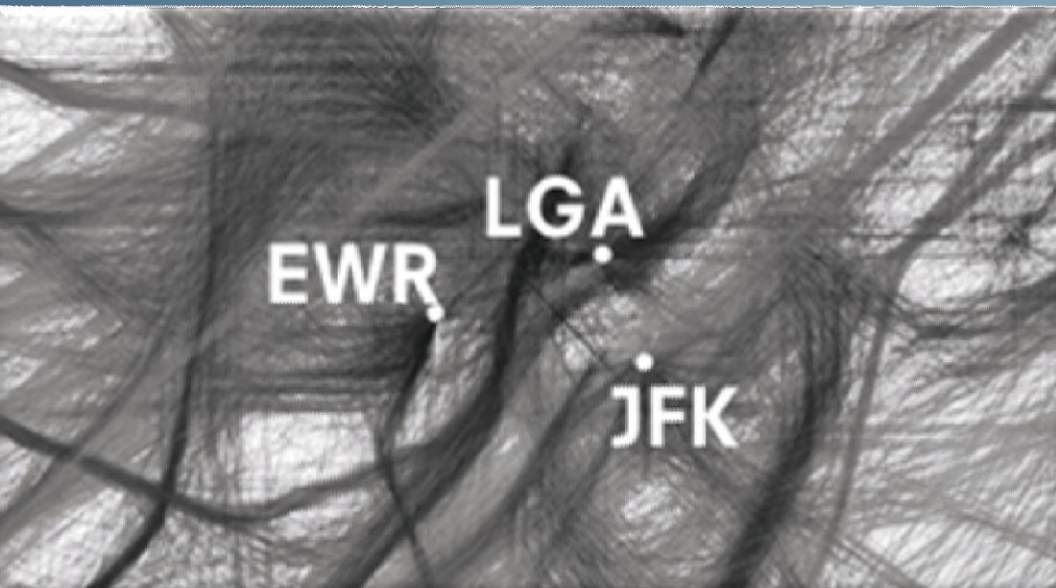
## East Side Access

150,000 riders save 45 min/day  
60% increase in capacity

# Future of the Region's Airports

Air delays cost the region \$2.6 billion per year, and will only get worse. We need the air capacity to support:

- 78 more aircraft movements per hour (From 236 today)
- 39 million more passengers
- Reduced delays to **10 minutes or less**, from 20+ now



# Strengthen the Centers for Competitive Advantage



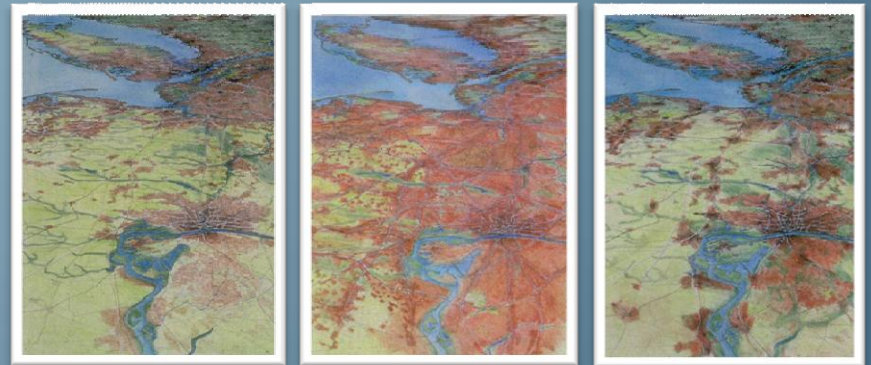
Strengthen the Region's CBD



New Institutions and uses in Centers



Invest in 11 Regional Downtowns



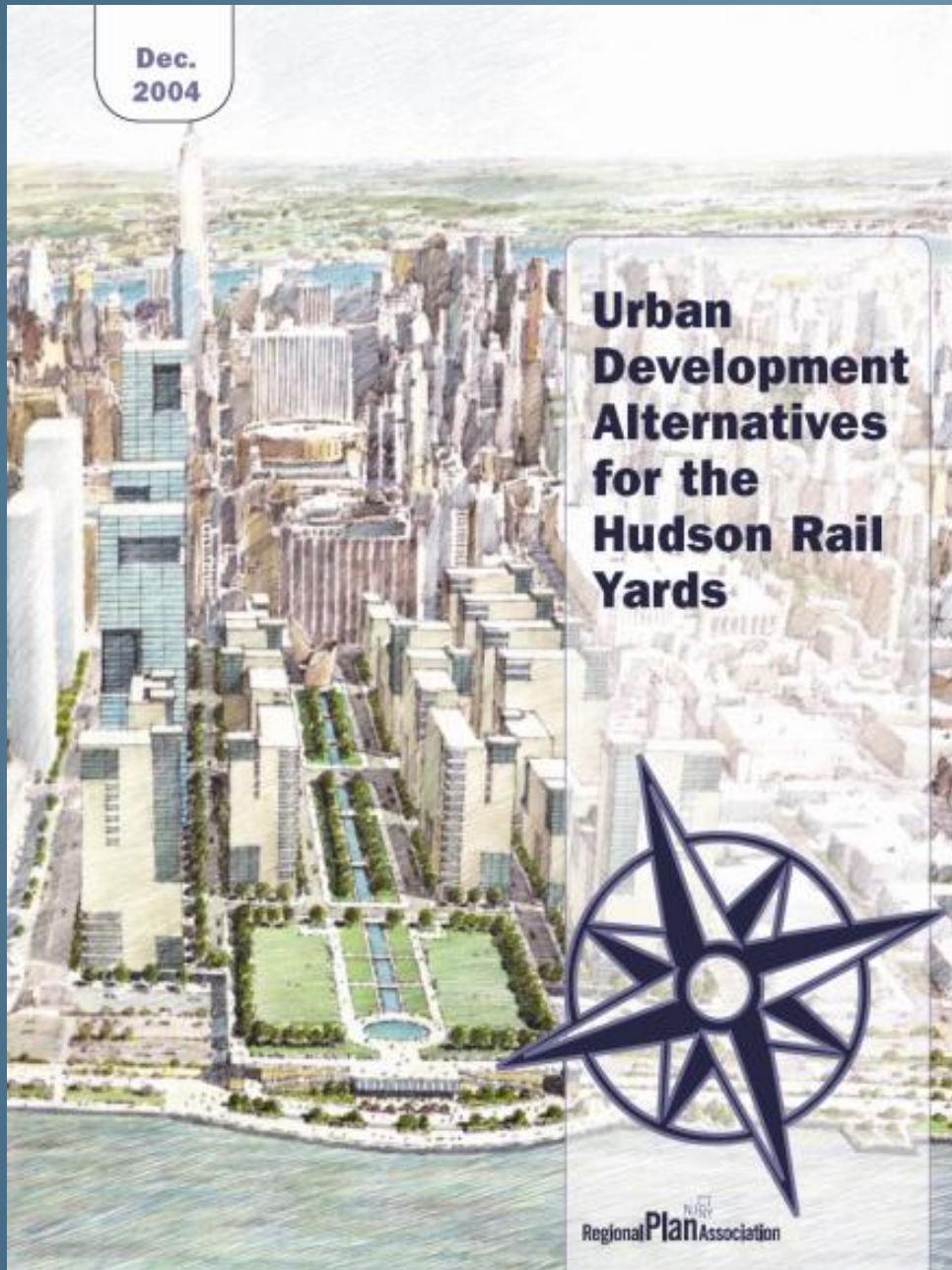
Create Transit-Friendly Centers

# Manhattan's Far West Side



Proposals for a football stadium would have limited the potential to create a third central business district

# Manhattan's Far West Side



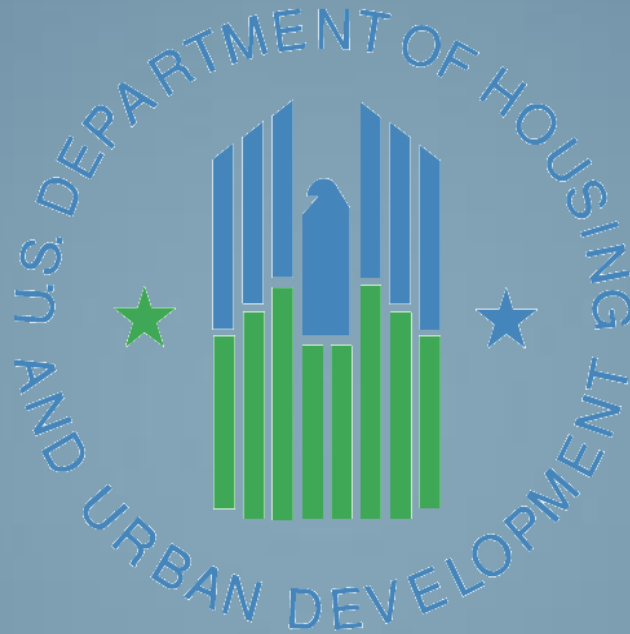
# Topics for Discussion

I. Global Competitiveness

**I. Poverty Reduction and Social Equity**

II. Climate Change and Sustainability

# Sustainable Communities – A Comprehensive Approach



A \$173 M partnership initiative for *livability*:

Sustainable Communities integrates transportation, housing, and land-use planning on a local and regional scale.



# Partners



NEW YORK & CONNECTICUT  
SUSTAINABLE COMMUNITIES

**SCRCOG**

○ New Haven

**GBVMPO**

○ Bridgeport

**SWRMPO**

○ Norwalk

**RPA**

○ Stamford

○ White Plains

Yonkers

○ Mount Vernon

○ New Rochelle

**NYMTC**

New York City

Nassau County

**LIRPC**

Suffolk County

## Advisory Board:

- CT Department of Economic and Community Development
- CT Housing Finance Agency
- Empire State Development Corporation
- New York State Department of State
- New York State Homes & Community Renewal
- North Jersey Transportation Planning Authority
- ICLEI - Local Governments for Sustainability
- Local Initiatives Support Corporation
- One Region Funders' Group
- Urban Land Institute
- WE ACT for Environmental Justice

## REGIONAL ORGS

## METROPOLITAN PLANNING ORGS

County \_\_\_\_\_

City \_\_\_\_\_

# Topics for Discussion

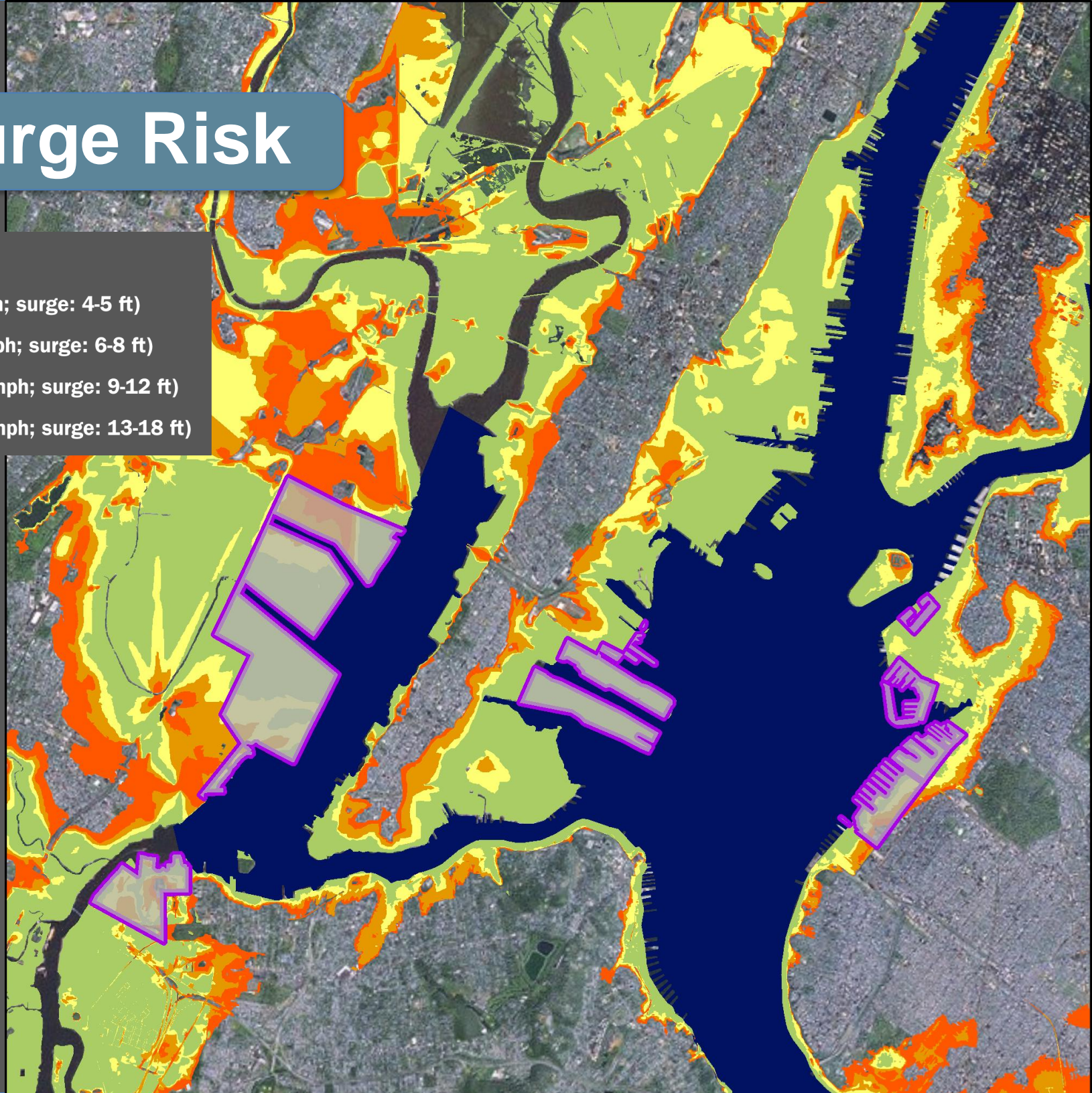
I. Global Competitiveness

I. Poverty Reduction and Social Equity

**II. Climate Change and Sustainability**

# Storm Surge Risk

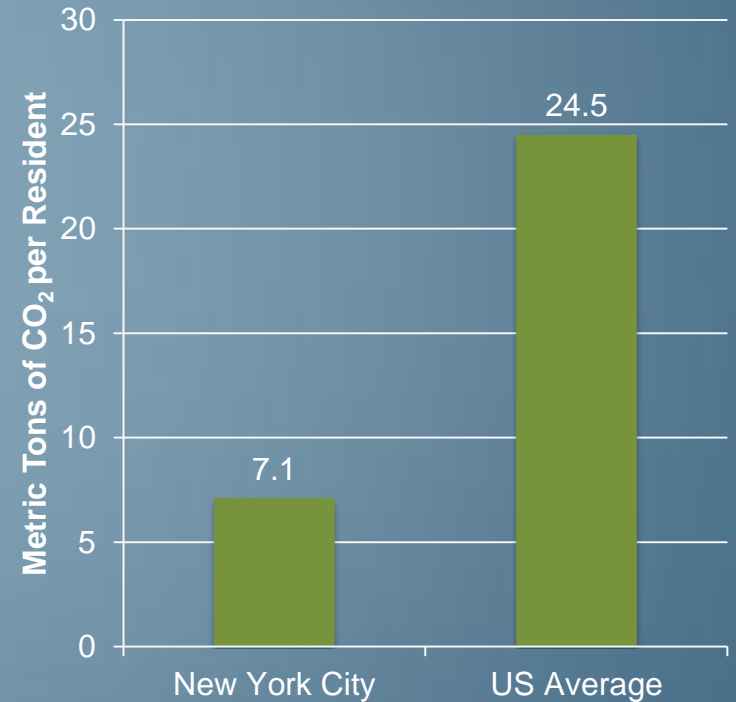
- Port Facilities
- Cat 1 (wind: 74-95 mph; surge: 4-5 ft)
- Cat 2 (wind: 96-110 mph; surge: 6-8 ft)
- Cat 3 (wind: 111-130 mph; surge: 9-12 ft)
- Cat 4 (wind: 131-155 mph; surge: 13-18 ft)



# Density is Sustainable



Annual Per Capita CO<sub>2</sub> Emissions

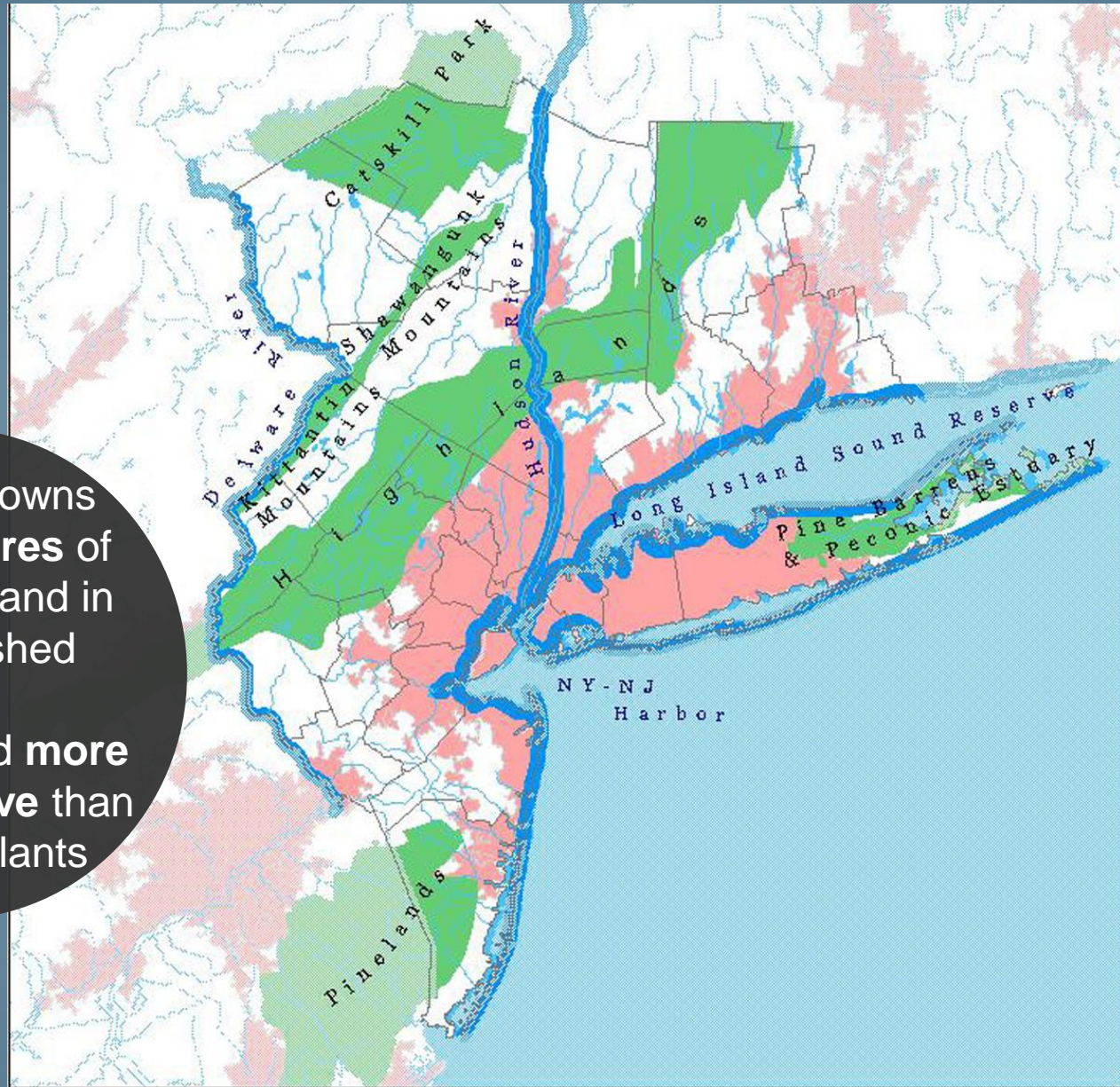


The average greenhouse gas footprint of a New York City resident is only 29% of the US average.

# Preserving Critical Landscapes

New York owns  
**114,000 acres** of  
preserved land in  
its watershed

**Cleaner and more  
cost effective** than  
filtration plants



The Third Regional Plan proposed Greensward –  
A 3 M acre network of protected natural resource systems.

A map of New York City where open spaces, including parks and green areas, are highlighted in a vibrant green color. The rest of the city, including buildings and streets, is shown in a light gray color. The surrounding water bodies, such as the Hudson River, East River, and Long Island Sound, are colored in a solid blue. The map shows a dense urban grid with scattered green patches throughout.

## Open space

29,000 acres of parks  
city-wide

One of the **lowest**  
**per-person rates**  
among major  
American cities

# PlaNYC

New York City's Sustainability Plan



**planyc**  
UPDATE APRIL 2011

**A GREENER,  
GREATER  
NEW YORK**



The City of New York  
Mayor Michael R. Bloomberg

Released in 2007, PlaNYC was an unprecedented effort undertaken by Mayor Bloomberg to prepare the city for one million more residents, strengthen our economy, combat climate change, and enhance the quality of life for all New Yorkers.

The Plan brought together over 25 City agencies to work toward the vision of a greener, greater New York. Since then, we have made significant progress towards our long-term goals.



# Our goals for achieving a greener, greater New York



## Housing and Neighborhoods

Create homes for almost a million more New Yorkers while making housing and neighborhoods more affordable and sustainable



## Transportation

Expand sustainable transportation choices and ensure the reliability and high quality of our transportation network



## Parks and Public Space

Ensure all New Yorkers live within a 10-minute walk of a park



## Energy

Reduce energy consumption and make our energy systems cleaner and more reliable



## Brownfields

Clean up all contaminated land in New York City



## Air Quality

Achieve the cleanest air quality of any big U.S. city



## Waterways

Improve the quality of our waterways to increase opportunities for recreation and restore coastal ecosystems



## Solid Waste

Divert 75% of our solid waste from landfills



## Water Supply

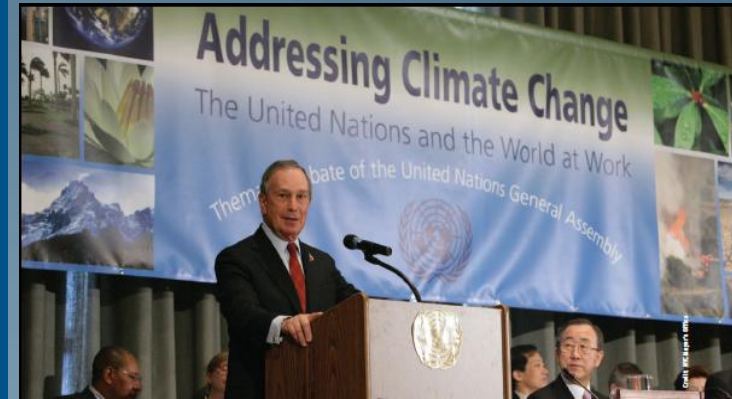
Ensure the high quality and reliability of our water supply system



## Climate Change

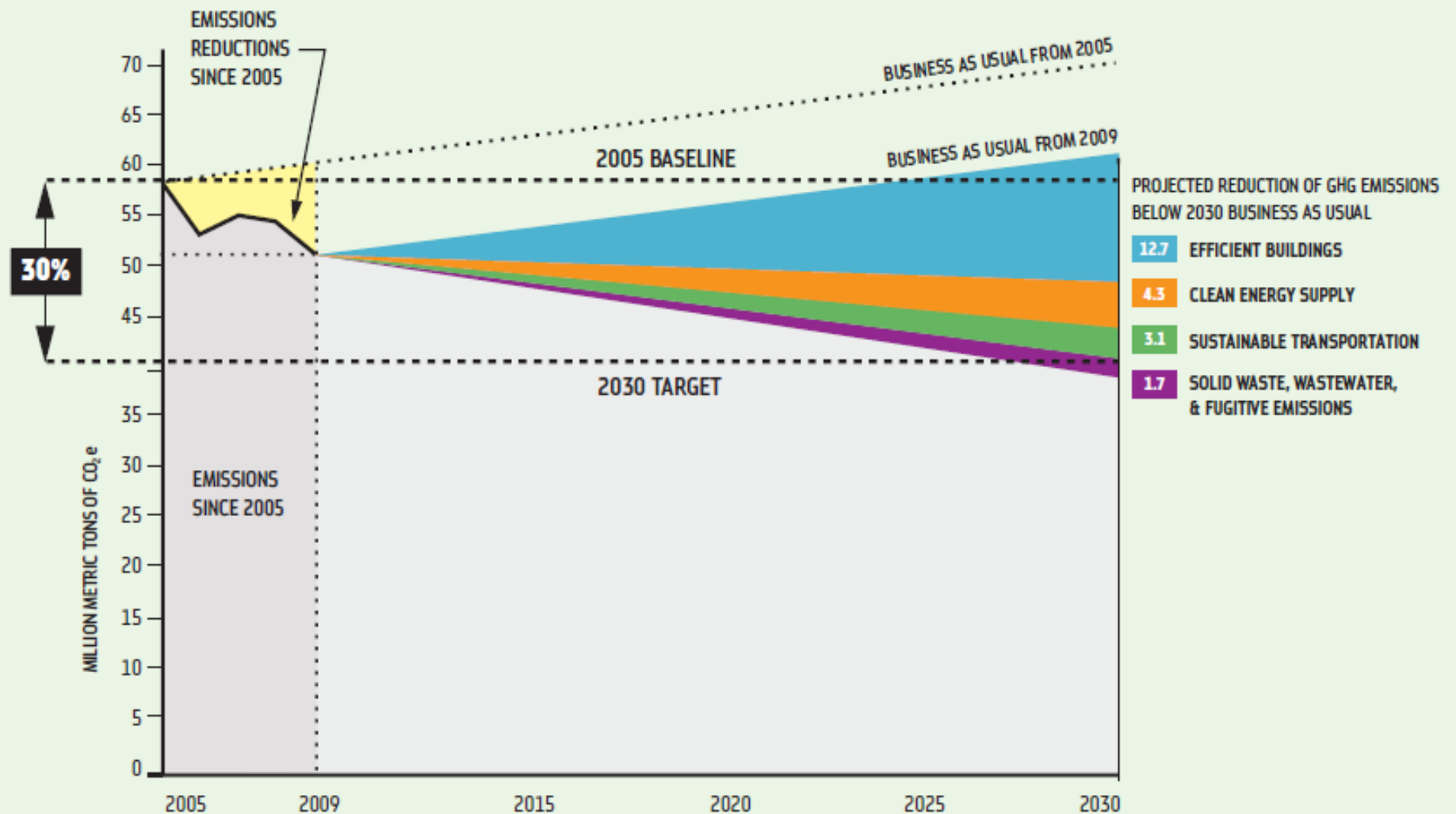
Reduce greenhouse gas emissions by more than 30%

Increase the resilience of our communities, natural systems, and infrastructure to climate risks



# Climate Change

## Projected Impacts of Our Greenhouse Gas Reduction Strategies



Source: NYC Mayor's Office and M.J. Beck Consulting, LLC



Population growth and growing diversity



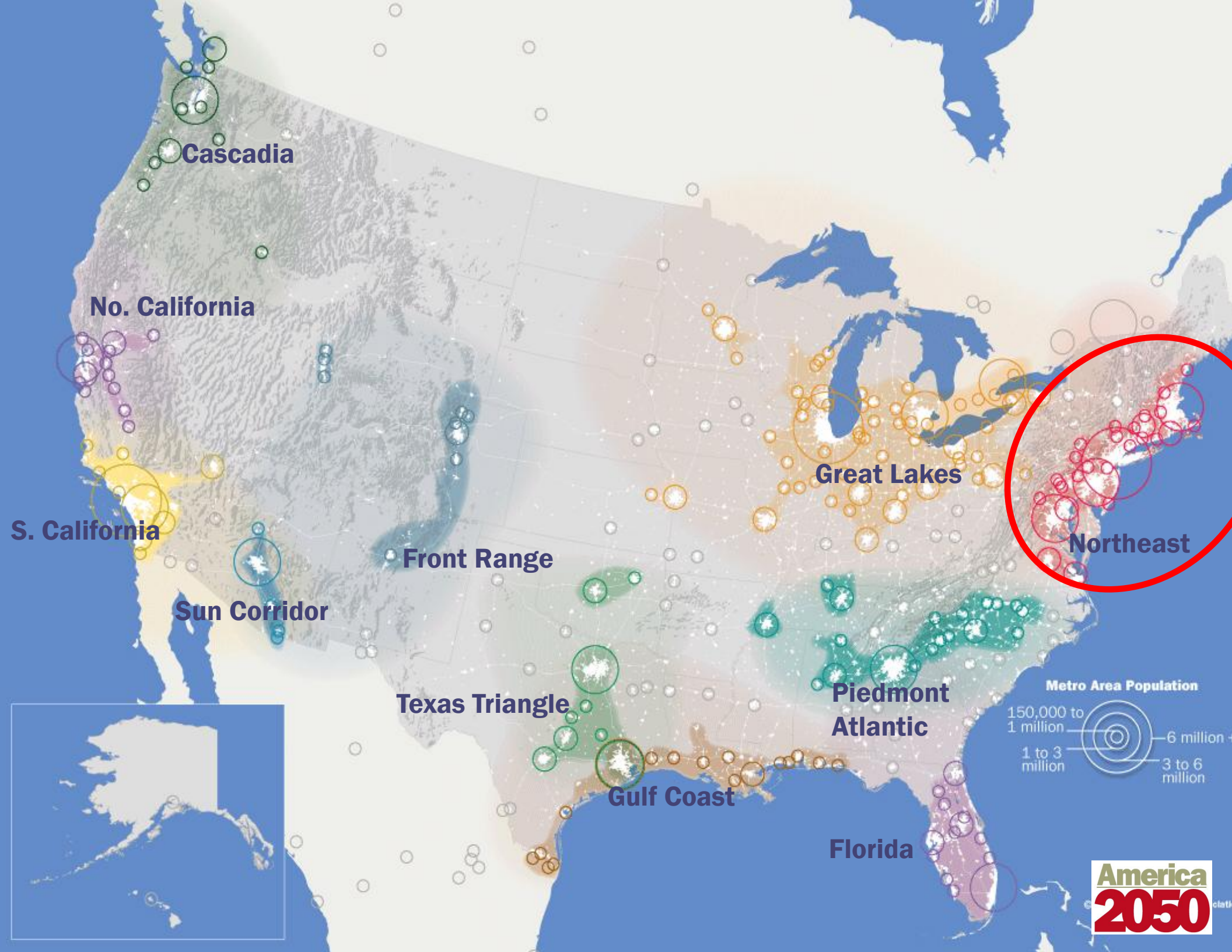
Climate change and dependence on imported oil

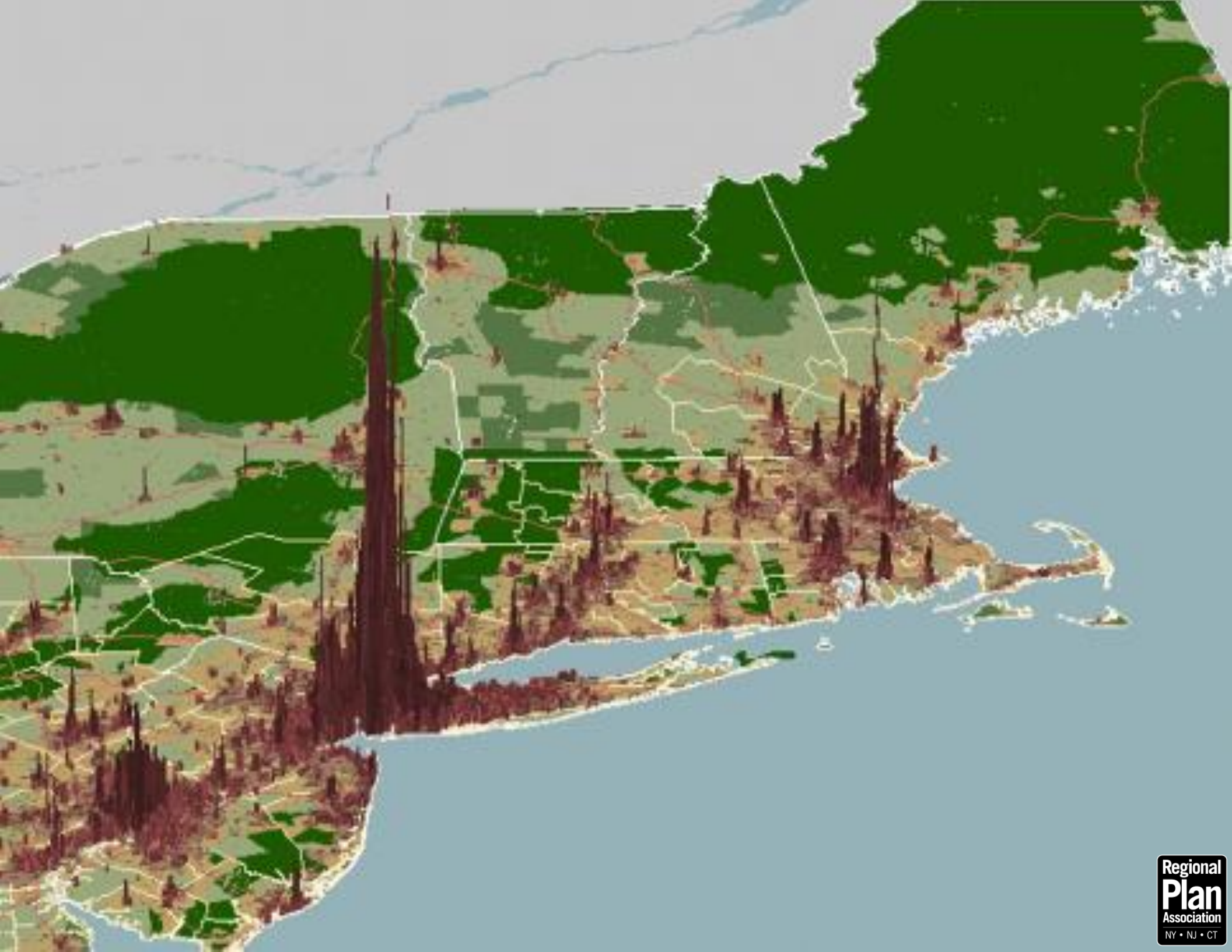


Globalization and the rise of megaregions

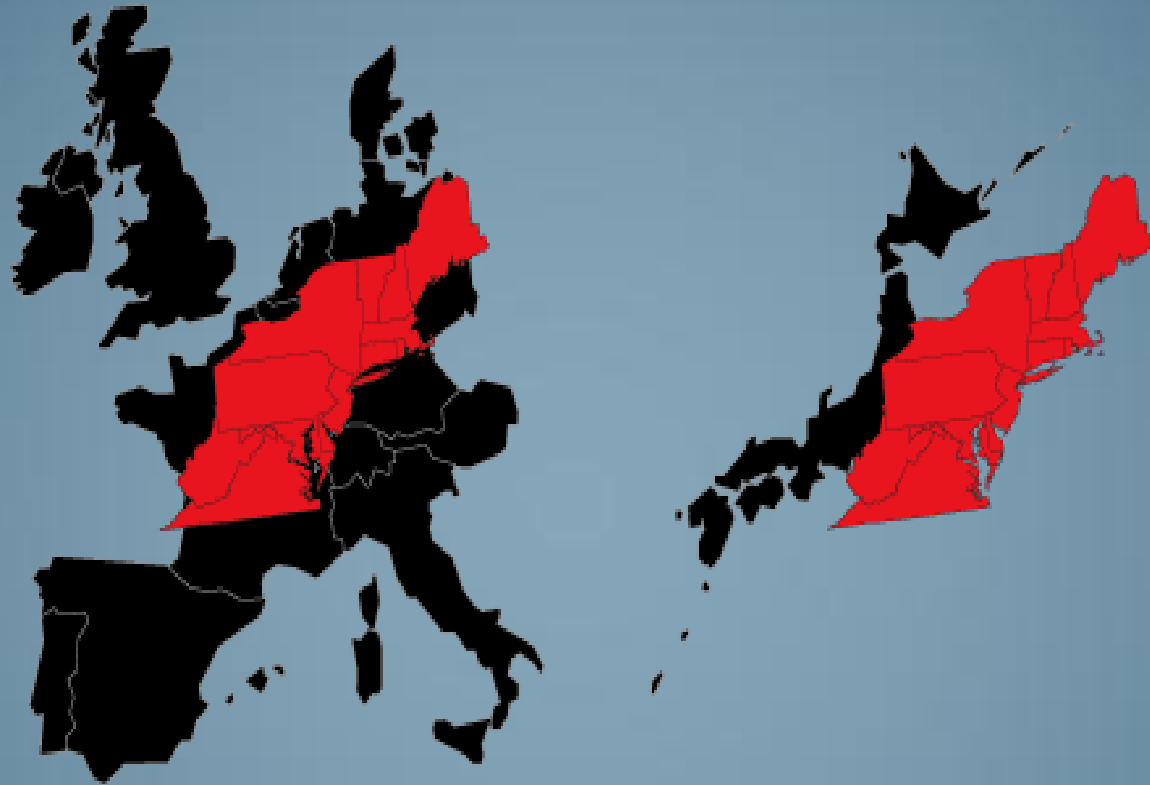


Deep economic recession, housing crisis, public sector fiscal constraints





**NORTHEAST** 237,700 mi<sup>2</sup> - 50 million people - \$2.59 trillion GDP



**WESTERN EUROPE**

16.4% area  
18.1% population  
23.7% GDP

**JAPAN**

162.9% area  
56.5% population  
85.8% GDP

# POPULATION

2050:

70 million people

Current:

50 million people

7 densest states in the country  
(and 9 of the top 11)



# ECONOMY

2050:

\$7+ trillion GDP

Current:

\$2.59 trillion GDP

20% of US economic output

162 Fortune 500 headquarters





High Speed Rail is the Mode of Choice in Megaregions





**BOSTON**  
432 miles  
867,800 daily riders

**NEW YORK**  
2,361 miles  
8,384,193 daily riders

**BALTIMORE**  
232 miles  
124,300 daily riders

**PHILADELPHIA**  
450 miles  
526,400 daily riders

**WASHINGTON, DC**  
106 miles  
801,400 daily riders

Baltimore (Penn Station)  
Baltimore (Charles Center)  
BWI Airport  
Odenton  
Washington, DC (Union Station)

New York (Moynihan Station)  
Newark (Penn Station)  
Metropark (Iselin)  
Trenton  
Philadelphia (30th St)  
Philadelphia (Market East)  
Philadelphia Airport  
Wilmington

Stamford  
New Haven  
Terryville (SUNY Stony Brook)  
Nassau Hub  
Rankunkoma - MacArthur Airport  
Farmingdale - Route 110  
Jamaica - JFK Airport

Riverside  
MetroWest  
Boston (South Station)  
Boston (Back Bay)  
Providence  
Hartford  
Meriden  
New London

NY

MA

CT

RI

PA

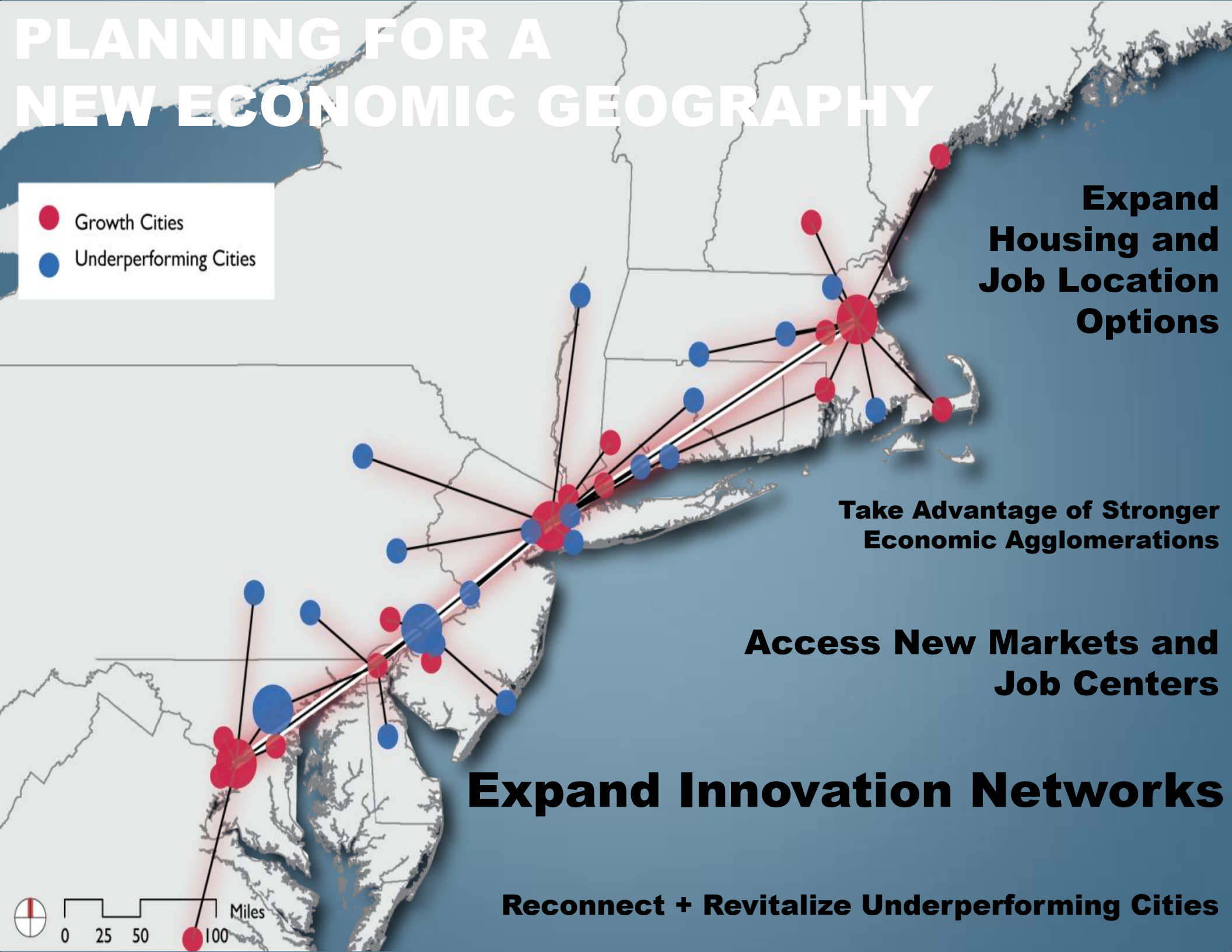
NJ

MD

VA

# PLANNING FOR A NEW ECONOMIC GEOGRAPHY

- Growth Cities
- Underperforming Cities



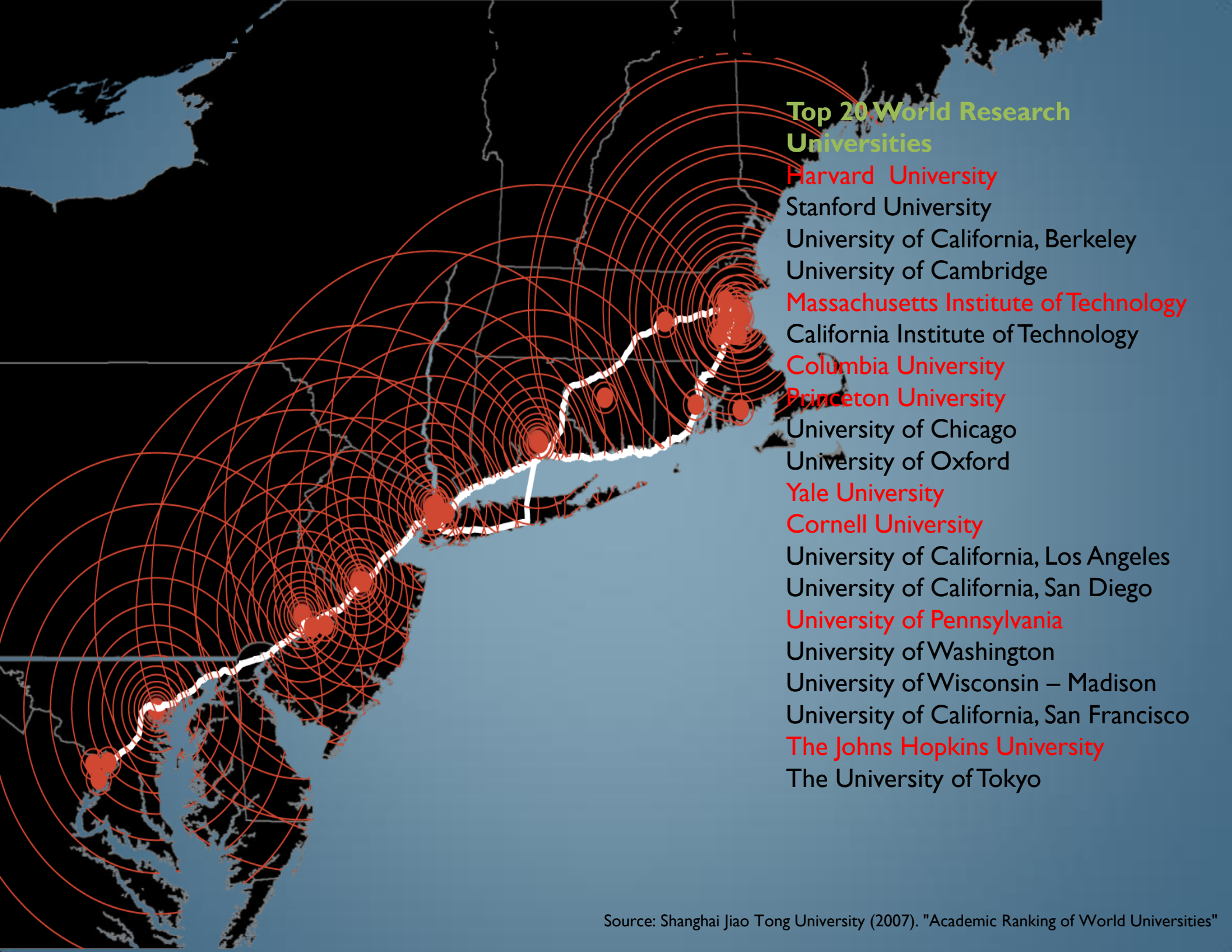
**Expand  
Housing and  
Job Location  
Options**

**Take Advantage of Stronger  
Economic Agglomerations**

**Access New Markets and  
Job Centers**

**Expand Innovation Networks**

**Reconnect + Revitalize Underperforming Cities**



## Top 20 World Research Universities

- Harvard University
- Stanford University
- University of California, Berkeley
- University of Cambridge
- Massachusetts Institute of Technology
- California Institute of Technology
- Columbia University
- Princeton University
- University of Chicago
- University of Oxford
- Yale University
- Cornell University
- University of California, Los Angeles
- University of California, San Diego
- University of Pennsylvania
- University of Washington
- University of Wisconsin – Madison
- University of California, San Francisco
- The Johns Hopkins University
- The University of Tokyo

# SUSTAINING LIVABILITY, SENSE OF PLACE OF BOTH FIRST AND SECOND TIER CITIES



Baltimore



New Haven



New York City



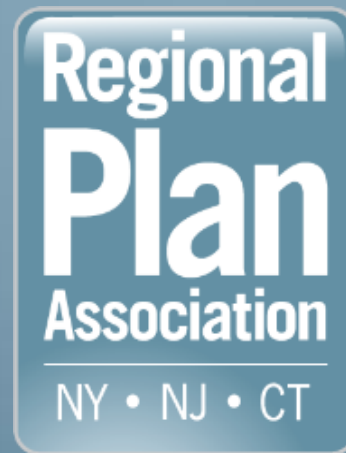
Stamford

# Toward a 4<sup>th</sup> Regional Plan for NY

- Key Issues to be Addressed:
  1. Maintaining NY's place in global economy
  2. Sustaining the region's livability and efficiency
  3. Bringing millions of immigrants into region's mainstream
  4. Climate adaptation strategy
  5. Implementing "smart region / smart city technologies
  6. Adapting the region to the new lifestyle preferences and work patterns of



[www.America2050.org](http://www.America2050.org)



[www.RPA.org](http://www.RPA.org)